



## WATER and RIVER ENVIRONMENT Group

**Legend**

- station
  - ★ Zaung tu
  - ★ Bago
- River
- High : 680
- Low : 0

**BAGO STATION**

流量 [m<sup>3</sup>/s] (Left Y-axis, 0 to 3000)

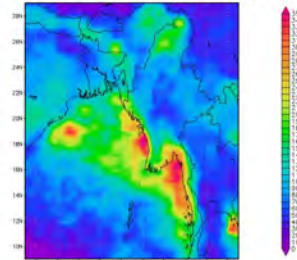
降水量 [mm] (Right Y-axis, 0 to 200)

Month: J F M A M J J A S O N D

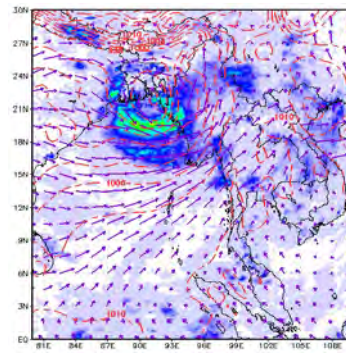
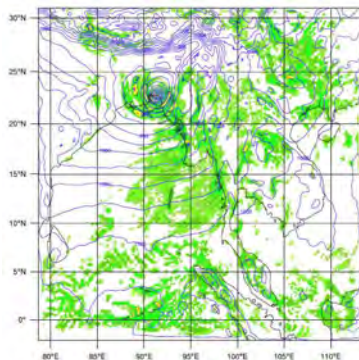
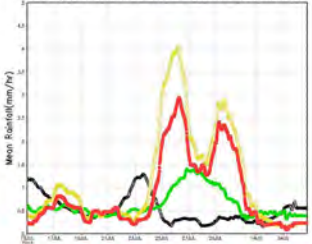
Scale: 0 10 20 40 Kilometers

# Workshop on Flood Disaster Reduction in Myanmar

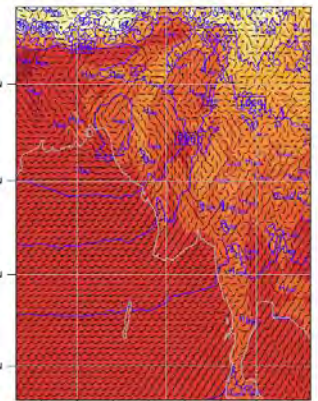
TRMM3B42 Accumulated 20-22 July 2006 Precipitation



Daily Rainfall Time Series for NM,DRM,UWML,WM



Surface Temperature (K)  
Sea Level Pressure (hPa)  
Wind (m/s)



Sea Level Pressure Contours: 900 to 1100 by 4  
Surface temperature (K)

**14:00-17:00 February 29, 2016**  
**Rm #16, Engineering Building 1**  
**University of Tokyo, Hongo Campus**

### CONTACT

Water Cycle Data Integrator Research and Education Unit (Nippon Koei)  
 Department of Civil Engineering The University of Tokyo (UTokyo)  
 7-3-1 Hongo, Bunkyo-ku, Tokyo 113-8656, Japan  
 TEL: +81-3-5841-6108  
 Email: wci@hydra.t.u-tokyo.ac.jp/ racierto@hydra.t.u-tokyo.ac.jp

*JST/JICA SATREPS Project*  
*Development of a comprehensive disaster resilience*  
*system and collaboration platform in Myanmar*

